

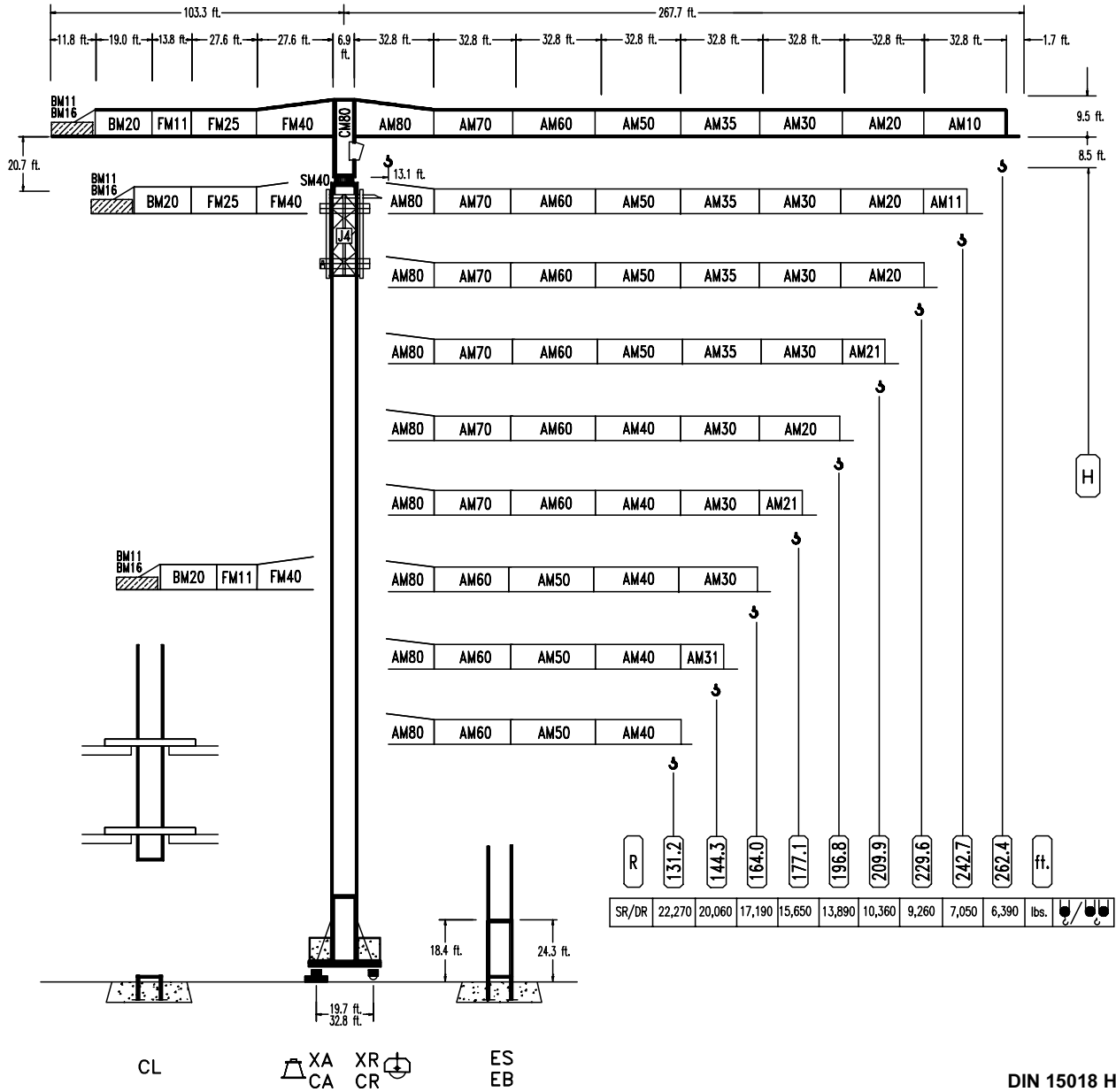


# COMANSA

## LINDEN 8000

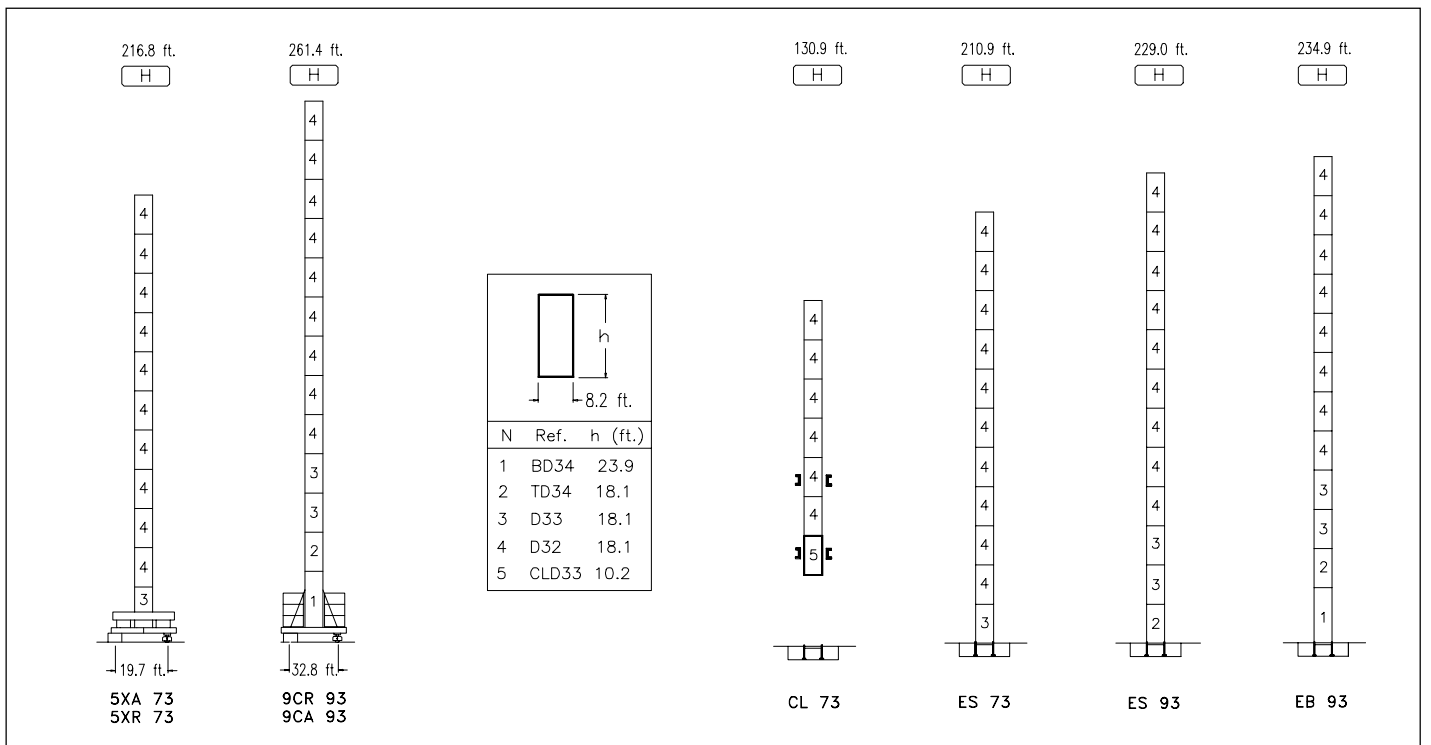
## LC-8752

## 39,680 lbs.



**CE**  
DIN 15018 H1 B3

R	R(Cmax)	Cmax	98.4	111.5	131.2	144.3	164.0	177.1	196.8	209.9	229.6	242.7	262.4	ft.	lbs.
262.4	SR/DR	61.0 ft.	39,680	22,770	19,620	16,140	14,330	12,190	11,040	9,610	8,800	7,760	7,160	6,390	
242.7	SR/DR	60.4 ft.	39,680	22,490	19,380	15,920	14,130	12,010	10,890	9,460	8,660	7,650	7,050		
229.6	SR/DR	68.9 ft.	39,680	26,320	22,750	18,760	16,730	14,310	12,980	11,350	10,430	9,260			
209.9	SR/DR	68.6 ft.	39,680	26,170	22,620	18,650	16,620	14,200	12,900	11,260	10,360				
196.8	SR/DR	80.4 ft.	39,680	31,500	27,290	22,620	20,220	17,350	15,810	13,890					
177.1	SR/DR	79.7 ft.	39,680	31,190	27,030	22,400	20,020	17,170	15,650						
164.0	SR/DR	79.7 ft.	39,680	31,220	27,050	22,400	20,040	17,190							
144.3	SR/DR	79.7 ft.	39,680	31,260	27,090	22,440	20,060								
131.2	SR/DR	79.4 ft.	39,680	31,040	26,890	22,270									



**CFU-7.5**  
**10 hp.**

0 ⚡ 282 ft./min

**GR-10**  
**4 x 73 ft.lbs**

0 ⚡ 0,7 rpm

**TRA-7.5** | **TRA-10**  
**2 x 55 ft.lbs. 4 x 73 ft.lbs.**

0 ⚡ 66 ft./min

**5XR 73** | **9CR 93**

**TRA-7.5VC** | **TRA-10VC**  
**2 x 55 ft.lbs. 4 x 73 ft.lbs.**

0 ⚡ 66 ft./min

**5XR 73** | **9CR 93**

**EEA3-90-45**  
**108 kW**

	I	II	III
SR	ft./min 12 ⚡ 188	18 ⚡ 284	50 ⚡ 756
	lbs. 19,840	13,220	3,970
DR	ft./min 6 ⚡ 94	9 ⚡ 142	25 ⚡ 378
	lbs. 39,680	26,450	7,940

**EFU4-45-45**  
**54 hp.**

	SR	DR
lbs	19,840	39,680
ft./min	86	43
	130	65
	196	98
	262	131
	328	164
	360	180
	3,970	7,940

**EFU4-65-45**  
**78 hp. kW**

	SR	DR
lbs	19,840	39,680
ft./min	118	59
	196	98
	328	164
	460	230
	492	246
	3,970	7,930

Tensión de alimentación Operating voltage	<b>480 V</b> <b>3 ph</b> <b>60 Hz</b>
--	---

OPCIONAL  
OPTIONAL

<b>R. máx.</b> En servicio In operation	<b>5XR73 ..... 293,650 lbs.</b> <b>9CR93 ..... 220,680 lbs.</b>
--	--

<b>R. máx.</b> Fuera de servicio Out of service	<b>5XR73 ..... 254,410 lbs.</b> <b>9CR93 ..... 253,970 lbs.</b>
--	--

**NOTE: ALL ORIGINAL WEIGHTS AND MEASUREMENTS ARE METRIC AND ABOVE ARE ROUNDED-OFF CONVERSIONS OF SAME. FOR EXACT WEIGHTS AND MEASUREMENTS, SEE SHEET DS.0102.19**



**Construcciones Metálicas COMANSA S. A.**  
Polígono Industrial de Areta  
E-31620 Huarte-Pamplona.- SPAIN  
Tel.: (34) 948 335 020 - Fax: (34) 948 330 810  
e-mail: info@comansa.com