

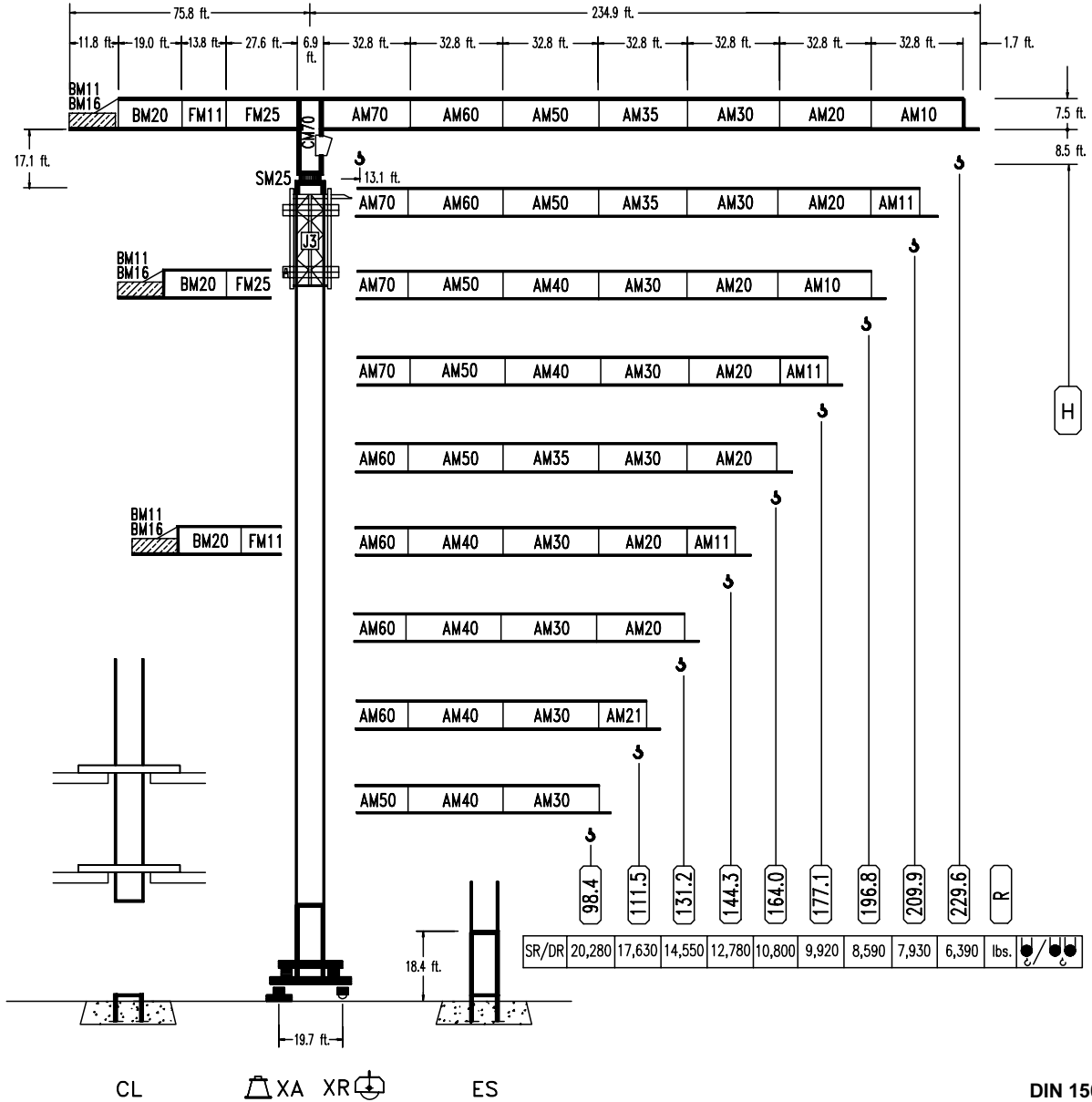


COMANSA

LINDEN 8000

LC-8652

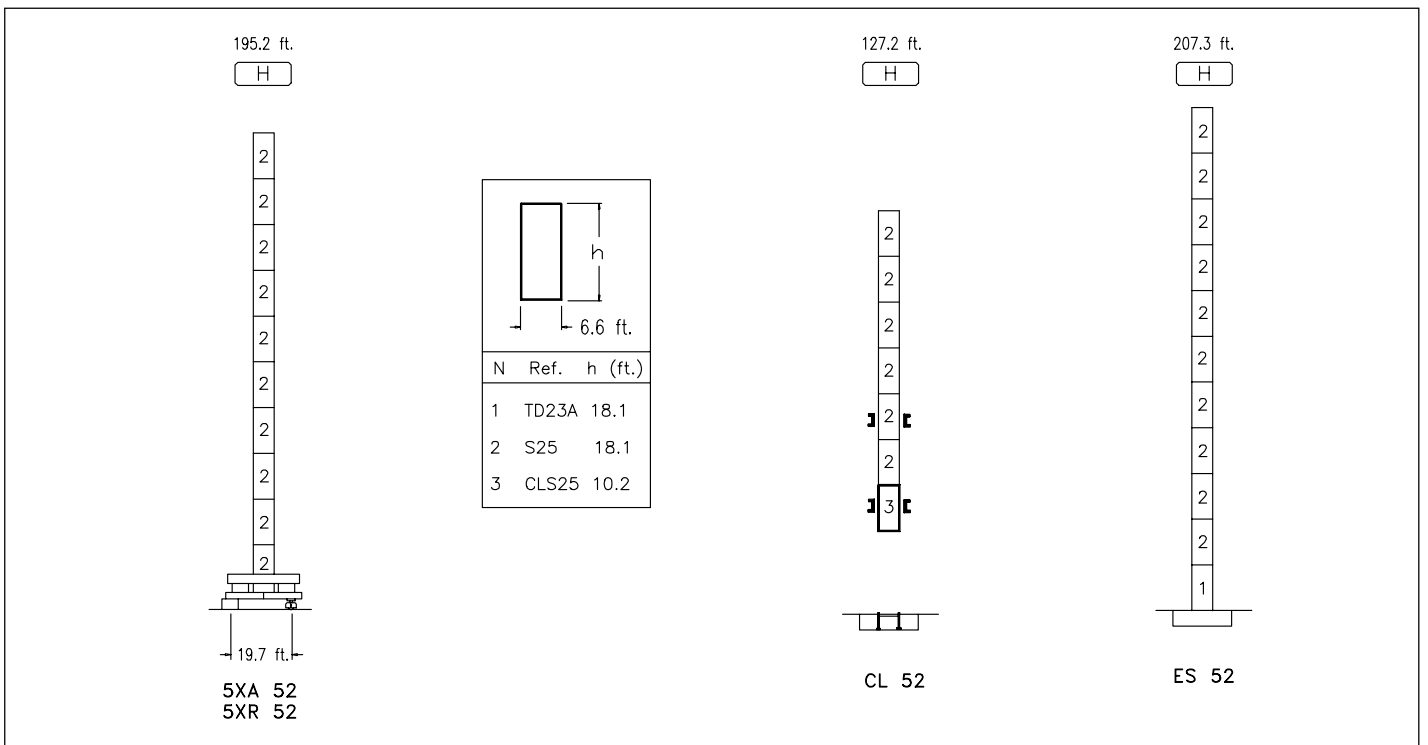
39,680 lbs.



CE

DIN 15018 H1 B3

R	R _(Cmax)	C _{max}	65.6	82.0	98.4	111.5	131.2	144.3	164.0	177.1	196.8	209.9	229.6	ft.
229.6	SR/DR	53.8 ft.	39,680	31,430	24,220	19,480	16,750	13,690	12,125	10,270	9,250	8,000	7,290	6,390
209.9	SR/DR	56.7 ft.	39,680	33,570	25,900	20,890	17,960	14,720	13,070	11,080	10,000	8,680	7,930	
196.8	SR/DR	56.4 ft.	39,680	33,310	25,680	20,720	17,810	14,590	12,940	10,970	9,920	8,590		
177.1	SR/DR	56.4 ft.	39,680	33,310	25,680	20,720	17,810	14,590	12,940	10,970	9,920			
164.0	SR/DR	55.7 ft.	39,680	32,820	25,300	20,410	17,540	14,370	12,740	10,800				
144.3	SR/DR	55.7 ft.	39,680	32,930	25,390	20,450	17,610	14,410	12,780					
131.2	SR/DR	56.1 ft.	39,680	33,200	25,610	20,650	17,760	14,550						
111.5	SR/DR	56.1 ft.	39,680	32,980	25,440	20,500	17,630							
98.4	SR/DR	55.4 ft.	39,680	32,650	25,180	20,280								



CFU-7.5
10 hp.
 0 \varnothing 282 ft./min

GR-10
3 x 73 ft.lbs
 0 \varnothing 0,7 rpm

TRA-7.5
2 x 55 ft.lbs.
 0 \varnothing 66 ft./min

TRA-7.5VC
2 x 55 ft.lbs.
 0 \varnothing 66 ft./min

EEA3-90-45
108 kW

	I	II	III
SR	12 \varnothing 188	18 \varnothing 284	50 \varnothing 756
	19,840	13,220	3,970
DR	6 \varnothing 94	9 \varnothing 142	25 \varnothing 378
	39,680	26,450	7,940

EFU4-45-45
54 hp.

SR

DR

EFU4-65-45
78 hp. kW

SR

DR

Tensión de alimentación Operating voltage	480 V 3 ph 60 Hz
--	---

OPCIONAL
OPTIONAL

R. máx. En servicio In operation	5XR52 293,570 lbs.
--	---------------------------------

R. máx. Fuera de servicio Out of service	5XR52 254,340 lbs.
--	---------------------------------

NOTE: ALL ORIGINAL WEIGHTS AND MEASUREMENTS ARE METRIC AND ABOVE ARE ROUNDED-OFF CONVERSIONS OF SAME. FOR EXACT WEIGHTS AND MEASUREMENTS, SEE SHEET DS.0102.17



Construcciones Metálicas COMANSA S. A.
 Polígono Industrial de Areta
 E-31620 Huarte-Pamplona.- SPAIN
 Tel.: (34) 948 335 020 - Fax: (34) 948 330 810
 e-mail: info@comansa.com