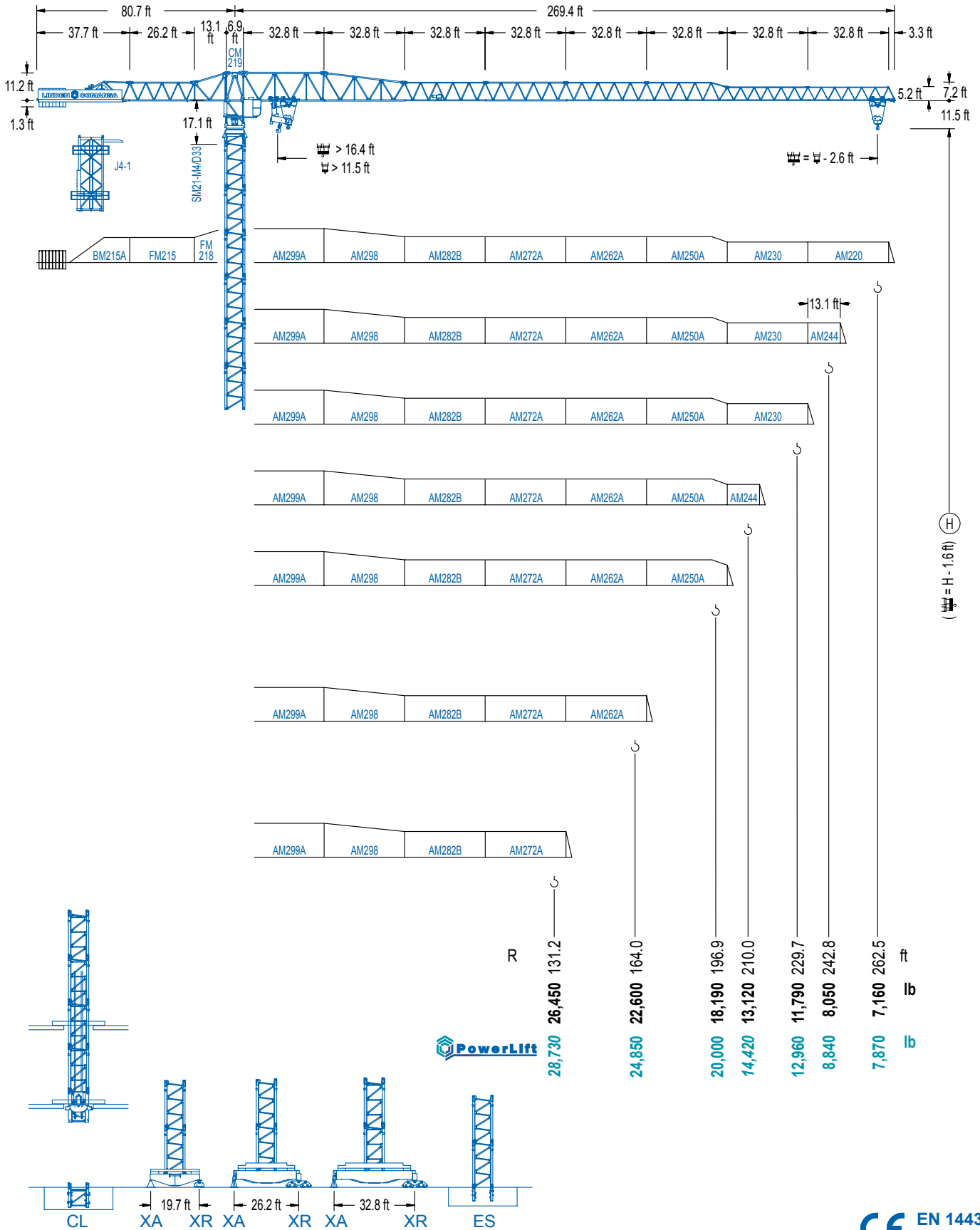


LC 2100

21 LC 550

52,910 lb



LC 2100

DIAGRAMA DE CARGAS

Load chart / Diagramme de charges / Lastdiagramm / Diagramma di carico / Диаграмма распределения нагрузки

R (ft)																
262.5	50.2 52,910	59.1 43,230	65.6 37,910	86.9 26,450	93.5 26,450	114.8 20,740	131.2 17,680	147.6 15,320	164.0 13,440	180.4 11,900	196.9 10,640	210.0 9,760	229.7 8,640	242.8 8,000	262.5 7,160	ft lb
242.8	49.9 52,910	59.1 43,120	65.6 37,830	86.6 26,450	93.5 26,450	114.8 20,830	131.2 17,760	147.6 15,380	164.0 13,510	180.4 11,970	196.9 10,690	210.0 9,810	229.7 8,680	242.8 8,040	ft lb	
229.7		61.4 52,910	65.6 48,800	82.0 37,140	107.0 26,450	117.5 26,450	131.2 23,250	147.6 20,260	164.0 17,870	180.4 15,930	196.9 14,320	210.0 13,200	229.7 11,790	ft lb		
210.0		60.7 52,910	65.6 48,210	82.0 36,680	106.0 26,450	116.8 26,450	131.2 23,100	147.6 20,120	164.0 17,740	180.4 15,820	196.9 14,210	210.0 13,110	ft lb			
196.9			73.2 52,910	82.0 46,160	98.4 36,970	114.8 30,480	128.3 26,450	142.7 26,450	164.0 22,530	180.4 20,150	196.9 18,180	ft lb				
164.0			72.8 52,910	82.0 45,850	98.4 36,720	114.8 30,260	127.6 26,450	143.0 26,450	164.0 22,590	ft lb						
131.2			72.5 52,910	82.0 45,720	98.4 36,610	127.3 26,450	131.2 26,450	ft lb								

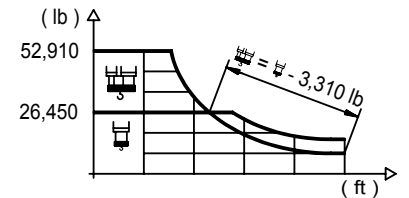
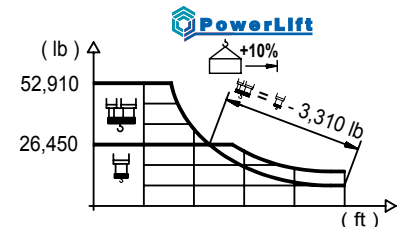


DIAGRAMA DE CARGAS POWERLIFT

Load chart PowerLift / Diagramme de charges PowerLift / Lastdiagramm PowerLift / Diagramma di carico PowerLift / Диаграмма распределения нагрузки PowerLift

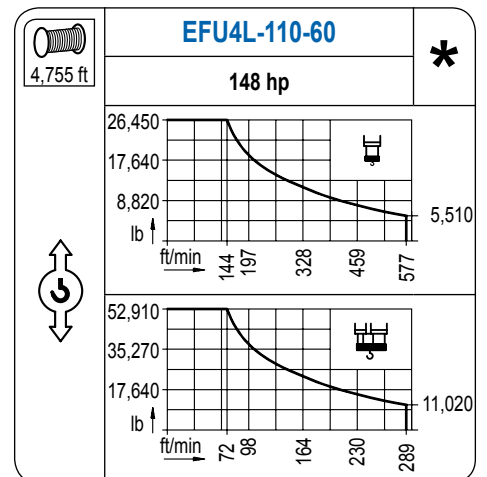
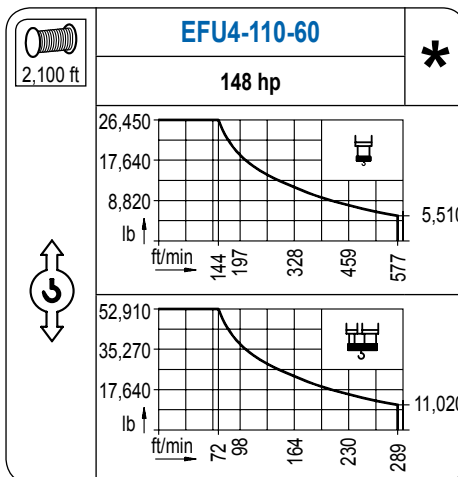
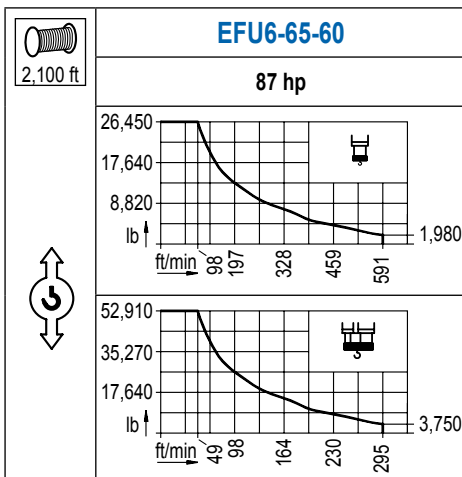
R (ft)																
262.5	51.8 52,910	65.6 39,460	75.5 33,110	89.6 26,450	99.4 26,450	114.8 22,390	131.2 19,110	147.6 16,600	164.0 14,590	180.4 12,940	196.9 11,590	210.0 10,640	229.7 9,450	242.8 8,770	262.5 7,870	ft lb
242.8	51.8 52,910	65.6 39,570	75.5 33,200	89.9 26,450	100.1 26,450	114.8 22,530	131.2 19,240	147.6 16,710	164.0 14,680	180.4 13,050	196.9 11,680	210.0 10,730	229.7 9,520	242.8 8,840	ft lb	
229.7		64.6 52,910	75.5 43,760	82.0 39,520	98.4 31,480	112.5 26,450	126.3 26,450	147.6 22,090	164.0 19,510	180.4 17,410	196.9 15,690	210.0 14,480	229.7 12,960	ft lb		
210.0		63.98 52,910	75.46 43,400	82.02 39,190	98.43 31,190	111.88 26,450	125.98 26,450	147.64 21,970	164.04 19,420	180.45 17,320	196.85 15,600	209.97 14,410	ft lb			
196.9			77.8 52,910	82.0 49,730	98.4 39,920	114.8 33,000	136.5 26,450	154.5 26,450	164.0 24,710	180.4 22,130	196.9 19,990	ft lb				
164.0			77.8 52,910	82.0 49,710	98.4 39,900	114.8 32,980	136.5 26,450	155.2 26,450	164.0 24,840	ft lb						
131.2			78.1 52,910	82.0 49,860	98.4 40,030	114.8 33,090	128.6 28,720	ft lb								



LC 2100

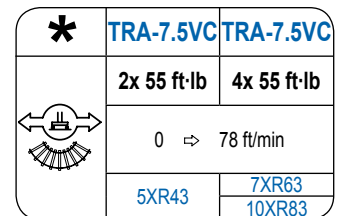
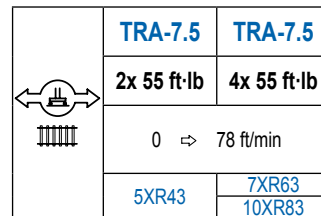
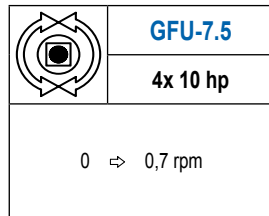
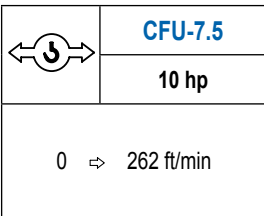
MECANISMOS

Mechanisms / Mécanismes / Antriebe / Meccanismi / Механизмы



MECANISMOS

Mechanisms / Mécanismes / Antriebe / Meccanismi / Механизмы



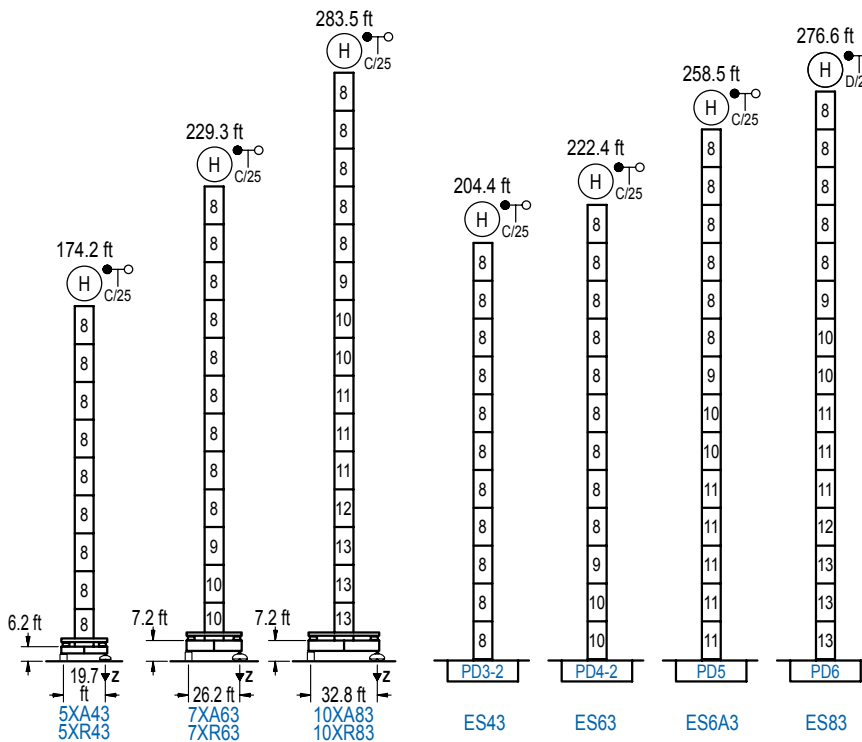
POTENCIA / POWER / PUISSANCE / LEISTUNG / POTENZA / МОЩНОСТЬ				Tensión de alimentación / Operating voltage / Tension de service / Betriebsspannung / Tensione di alimentazione / Напряжение источника питания	Generador / Generator / Générateur / Generator / Generatore / Генератор
Elevación / Hoist / Levage / Hub / Sollevamento / Тип механизма (подъем)	Carro / Trolley / Chariot / Laufkatze / Carrello / Грузовая тележка	Giro / Slewing / Rotation / Drehbewegung / Rotazione / Поворот	Traslación / Travel / Translation / Laufkatze / Carrello / Traslazione / Ход	480 V 3ph 60 Hz	195 kVA 260 kVA 260 kVA
EFU6-65-60	CFU-7.5	(4x) GFU-7.5	(2x) TRA-7.5 (4x) TRA-7.5		
EFU4-110-60					
EFU4L-110-60					

Opcional / Optional / En option / Kaufoption / Opzionale / Опционально

ALTURAS BAJO GANCHO

Heights under hook / Hauteurs sous crochet / Hakenhöhen / Altezza sotto gancio / Высота под крюком

∅ 8.2 ft

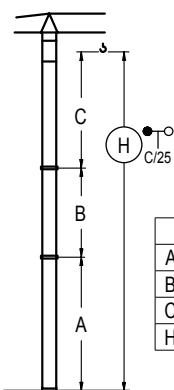


n°	Ref.	∅	h
8	D33	8.2	18.0
9	TD34	8.2	18.0
10	D34	8.2	18.0
11	D35	8.2	18.0
12	TD36B	8.2	18.0
13	D36	8.2	18.0

Z máx.	En servicio / In operation / En service / In Betrieb / In servizio / При работе	5XR43....295 kip 7XR63....267 kip 10XR83...260 kip
	Fuera de servicio / Out of service / Hors service / Ausser Betrieb / Fuori servizio / В стационарном состоянии	5XR43....205 kip 7XR63....254 kip 10XR83...410 kip

GRÚA ARRIOSTRADA

Braced crane / Grue à entretoisement / Abgespannter Kran / Gru ancorata / Нарастаемый кран

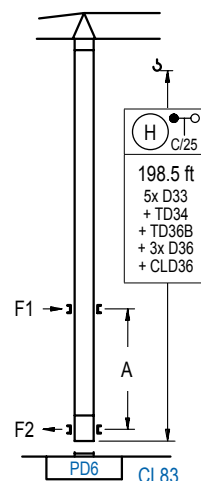


	5XA43	7XA63	10XA83
A max	132.5	187.7	241.8
B max	- 108.3	- 108.3	- 108.3
C max	168.0 149.9	149.9 149.9	149.9 149.9
H max	300.5 390.7	337.6 445.9	391.7 500.0

	ES43	ES63	ES6A3	ES83
A max	49,6	55,1	66,1	71,6
B max	- 108,3	- 108,3	- 108,3	- 108,3
C max	149,9 149,9	149,9 149,9	149,9 149,9	149,9 149,9
H max	312,7 420,9	330,7 439,0	366,8 475,1	384,8 493,1

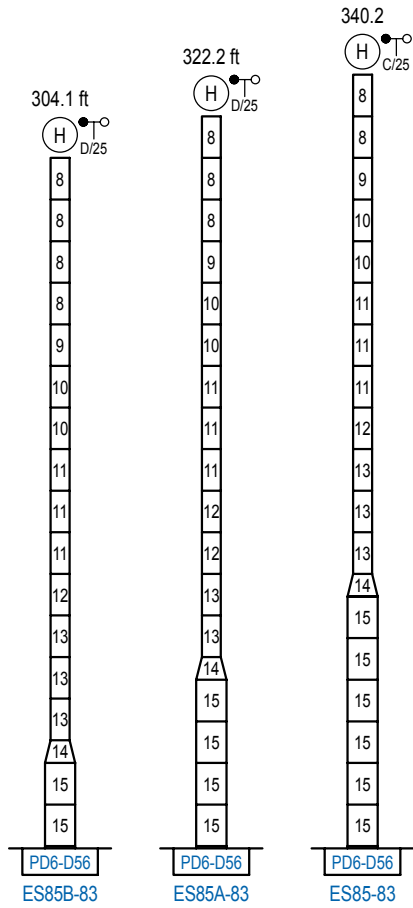
GRÚA TREPADORA

Internal climbing crane / Grue avec cage de télescopage intérieure / Kran mit klettern im Gebäude / Gru in rampante in cavedio / Монтажная кльть



n°	Ref.	∅	h
8	D33	8.2	18.0
9	TD34	8.2	18.0
12	TD36B	8.2	18.0
13	D36	8.2	18.0
19	CLD36	8.2	12.5

Otras zonas de viento, alturas superiores, arriostramientos o trepado interno consultar / Other wind zones, additional hook heights, tie frames or internal climbing on request / Autres zones de vent, des hauteurs supplémentaires, entretoisements ou grues avec cage de télescopage intérieure, sur demande / Andere Windzonen, weitere Hakenhöhen, Abspannungen zum Gebäude oder Klettern im Gebäude auf Anfrage / Per zone con velocità del vento particolari, altezze superiori, ancoraggi o rampante in cavedio, consultare il fabbricante / При других ветренных зонах, при большой высоте, привязках к зданию или наращивании крана внутри здания проконсультируйтесь с нами



n°	Ref.	Ø	h
8	D33	8.2	18.0
9	TD34	8.2	18.0
10	D34	8.2	18.0
11	D35	8.2	18.0
12	TD36B	8.2	18.0
13	D36	8.2	18.0
14	TD56D36	13.1	9.8
15	D56	13.1	18.0

Otras zonas de viento o alturas superiores consultar / Other wind zones or additional hook heights on request / Autres zones de vent ou des hauteurs supplémentaires sur demande / Andere Windzonen oder weitere Hakenhöhen auf Anfrage / Per zone con velocità del vento particolari o altezze superiori consultare il fabbricante / При других ветренных зонах о при большой высоте проконсультируйтесь с нами

LC 2100



Construcciones Metálicas COMANSA S. A.

Tel.: (34) 948 335 020 / Fax: (34) 948 330 810 / e-mail: info@comansa.com
Polígono Urbizkain E-31620 HUARTE-PAMPLONA.- SPAIN