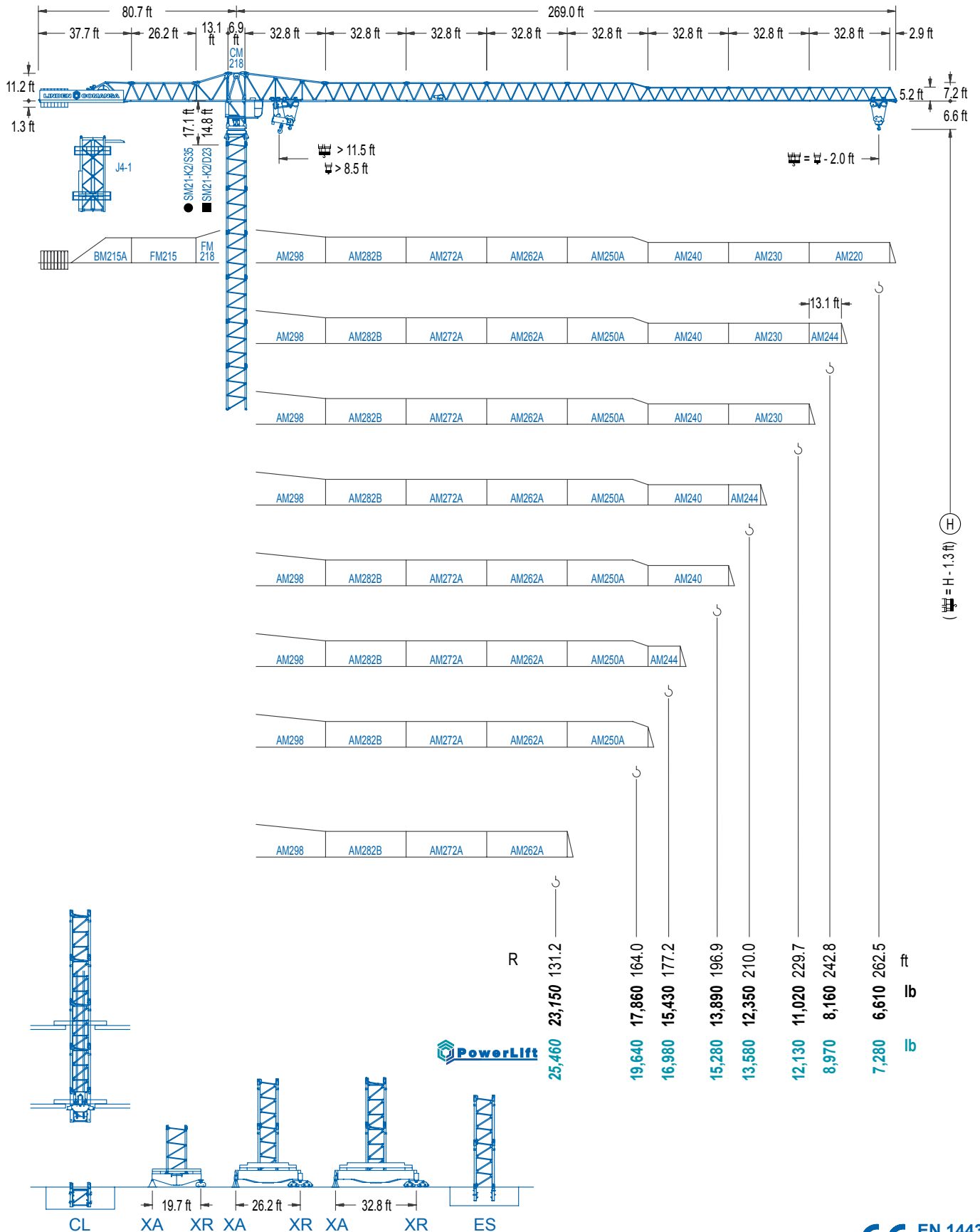


LC 2100

21 LC 400

39,680 lb



LC 2100

DIAGRAMA DE CARGAS

Load chart / Diagramme de charges / Lastdiagramm / Diagramma di carico / Диаграмма распределения нагрузки

R (ft)																
262.5	54.5 39,680	65.6 32,020	82.0 24,720	98.8 19,840	100.1 19,840	111.5 17,580	131.2 14,680	144.4 13,190	164.0 11,430	177.2 10,470	196.9 9,280	210.0 8,600	229.7 7,740	242.8 7,260	262.5 6,610	ft lb
242.8	59.1 39,680	65.6 35,220	82.0 27,250	107.6 19,840	110.2 19,840	111.5 19,560	131.2 16,350	144.4 14,710	164.0 12,760	177.2 11,700	196.9 10,380	210.0 9,640	229.7 8,690	242.8 8,150	ft lb	
229.7		71.2 39,680	82.0 33,760	98.4 27,420	111.5 23,730	129.9 19,840	135.2 19,840	144.4 18,440	164.0 16,030	177.2 14,720	196.9 13,100	210.0 12,190	229.7 11,020	ft lb		
210.0		71.5 39,680	82.0 33,970	98.4 27,600	111.5 23,880	130.9 19,840	136.5 19,840	144.4 18,670	164.0 16,220	177.2 14,910	196.9 13,270	210.0 12,340	ft lb			
196.9		73.8 39,680	82.0 35,250	98.4 28,670	111.5 24,830	135.5 19,840	142.1 19,840	144.4 19,510	164.0 16,970	177.2 15,590	196.9 13,880	ft lb				
177.2		72.8 39,680	82.0 34,700	98.4 28,200	111.5 24,430	133.5 19,840	140.7 19,840	144.4 19,300	164.0 16,780	177.2 15,430	ft lb					
164.0			76.4 39,680	82.0 36,710	98.4 29,870	111.5 25,900	140.4 19,840	149.0 19,840	164.0 17,850	ft lb						
131.2			80.4 39,680	82.0 38,740	98.4 31,550	111.5 27,370	129.3 23,140	ft lb								

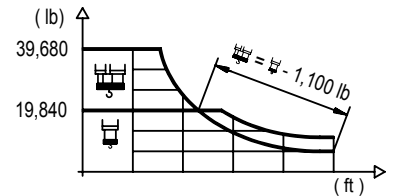
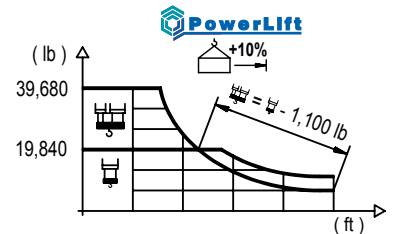


DIAGRAMA DE CARGAS POWERLIFT

Load chart PowerLift / Diagramme de charges PowerLift / Lastdiagramm PowerLift / Diagramma di carico PowerLift / Диаграмма распределения нагрузки PowerLift

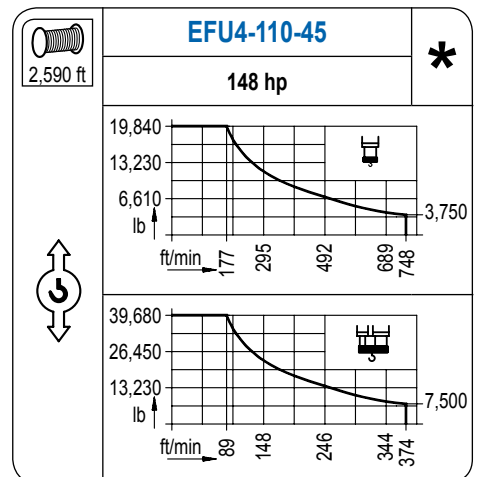
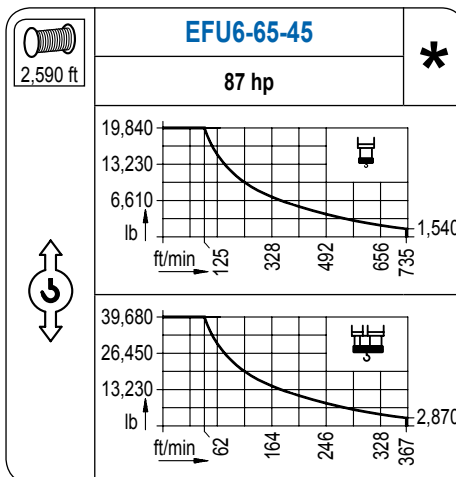
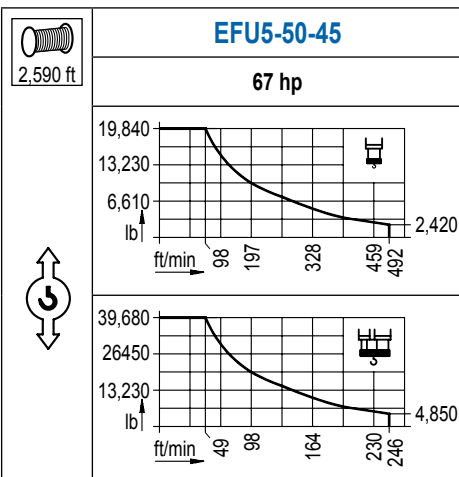
R (ft)															
262.5	57.7 39,680	65.6 34,300	82.0 26,520	105.0 19,840	107.9 19,840	131.2 16,020	144.4 14,410	164.0 12,500	177.2 11,460	196.9 10,160	210.0 9,430	229.7 8,500	242.8 7,980	262.5 7,270	ft lb
242.8		63.0 39,680	82.0 29,380	114.8 19,840	119.4 19,840	131.2 17,870	144.4 16,090	164.0 13,970	177.2 12,830	196.9 11,390	210.0 10,600	229.7 9,560	242.8 8,970	ft lb	
229.7		76.4 39,680	82.0 36,590	98.4 29,760	111.5 25,790	139.8 19,840	147.0 19,840	164.0 17,590	177.2 16,150	196.9 14,390	210.0 13,400	229.7 12,120	ft lb		
210.0		76.8 39,680	82.0 36,900	98.4 30,020	111.5 26,010	140.7 19,840	148.6 19,840	164.0 17,810	177.2 16,380	196.9 14,590	210.0 13,580	ft lb			
196.9			79.7 39,680	98.4 31,320	111.5 27,160	131.2 22,530	146.3 19,840	154.9 19,840	177.2 17,150	196.9 15,270	ft lb				
177.2			78.7 39,680	98.4 30,860	111.5 26,760	131.2 22,170	144.4 19,840	153.5 19,840	177.2 16,970	ft lb					
164.0			83.0 39,680	98.4 32,710	111.5 28,390	151.9 19,840	162.4 19,840	164.0 19,640	ft lb						
131.2			87.3 39,680	98.4 34,630	111.5 30,070	129.3 25,460	ft lb								



LC 2100

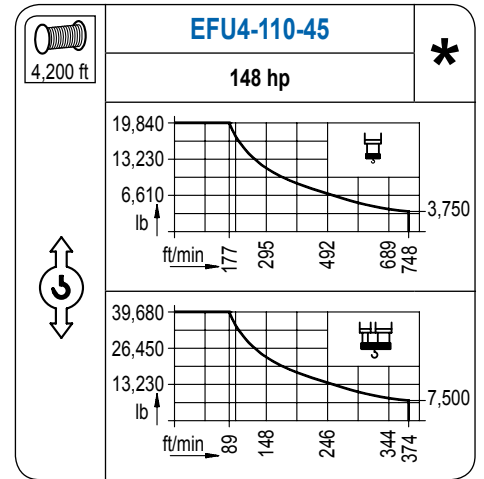
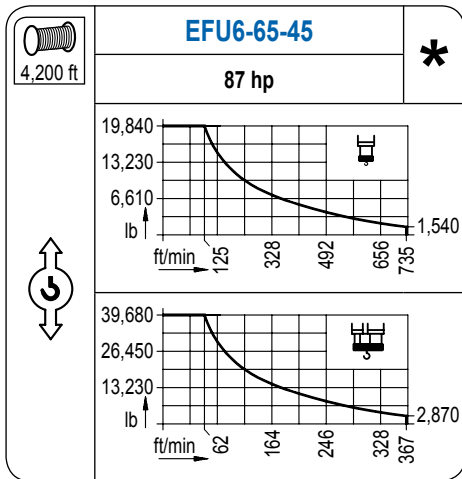
MECANISMOS

Mechanisms / Mécanismes / Antriebe / Meccanismi / Механизмы



MECANISMOS

Mechanisms / Mécanismes / Antriebe / Meccanismi / Механизмы



Para mecanismos de alta capacidad de cable consultar cargas. / For mechanisms with high drum capacity, request loads. / Pour des mécanismes avec une grande capacité de câble il faut consulter. / Für Hubmechanismen mit hoher Kabelkapazität, Lastdiagramm anfragen. / Gru con tamburo ad alta capacità di avvolgimento fune, consultare il diagramma di carico. / Проконсультируйтесь о нагрузках при механизмах с большей вместимостью кабеля.

	CFU-7.5
	10 hp
0 ⇔ 308 ft/min	

	GFU-7.5
	4x 10 hp
0 ⇔ 0,7 rpm	

	TRA-7.5	TRA-7.5
	2x55 ft-lb	4x55 ft-lb
0 ⇔ 78 ft/min		
	5XR43	7XR63 10XR83

	TRA-7.5VC	TRA-7.5VC
	2x55 ft-lb	4x55 ft-lb
0 ⇔ 78 ft/min		
	5XR43	7XR63 10XR83

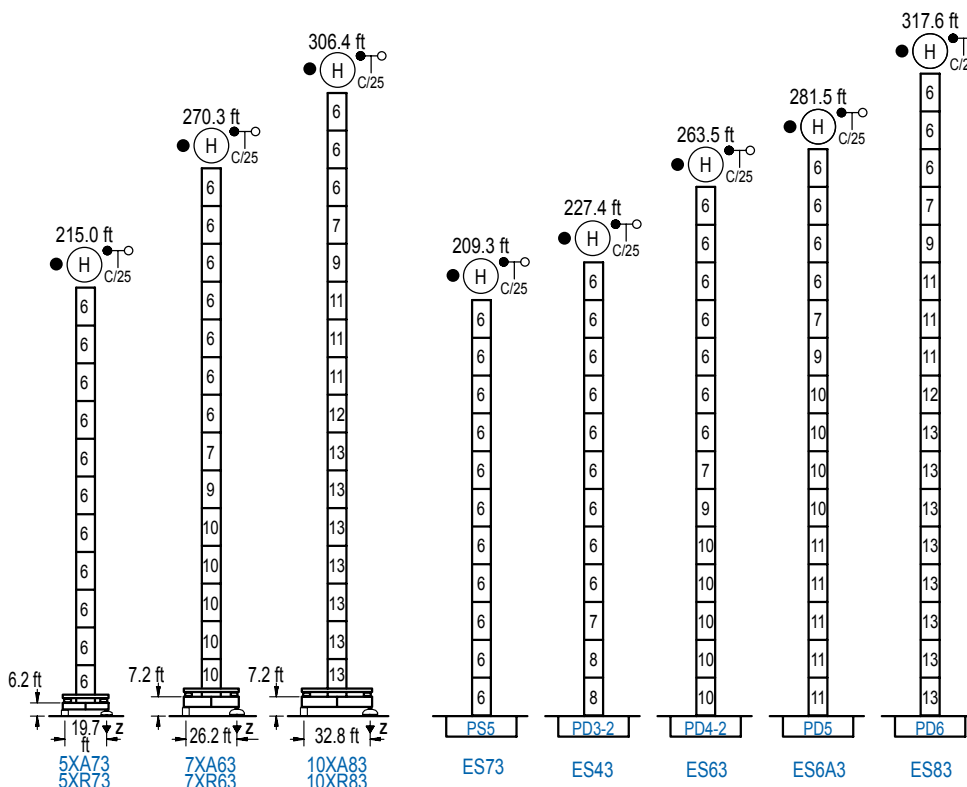
POTENCIA / POWER / PUISSANCE / LEISTUNG / POTENZA / МОЩНОСТЬ				Tensión de alimentación / Operating voltage / Tension de service / Betriebsspannung / Tensione di alimentazione / Напряжение источника питания	Generador / Generator / Générateur / Generator / Generatore / Генератор
Elevación / Hoist / Levage / Hub / Sollevamento / Тип механизма (подъем)	Carro / Trolley / Chariot / Laufkatze / Carrello / Грузовая тележка	Giro / Slewing / Rotation / Drehbewegung / Rotazione / Поворот	Traslación / Travel / Translation / Verfahrbewegung / Traslazione / Ход	480 V 3ph 60 Hz	170 kVA 195 kVA 195 kVA 260 kVA 260 kVA
EFU5-50-45	CFU-7.5	(4x) GFU-7.5	(2x) TRA-7.5 (4x) TRA-7.5		170 kVA
EFU6-65-45					195 kVA
EFU6L-65-45					195 kVA
EFU4-110-45					260 kVA
EFU4L-110-45					260 kVA

Optional / Optional / En option / Kaufoption / Opzionale / Опционально
*

ALTURAS BAJO GANCHO

Heights under hook / Hauteurs sous crochet / Hakenhöhen / Altezza sotto gancio / Высота под крюком

∅ 8.2 ft



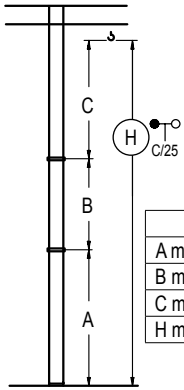
n°	Ref.	∅	h
6	S35	8.2	18.0
7	TD33A	8.2	18.0
8	D33	8.2	18.0
9	TD34	8.2	18.0
10	D34	8.2	18.0
11	D35	8.2	18.0
12	TD36B	8.2	18.0
13	D36	8.2	18.0

Z máx.	En servicio / In operation / En service / In Betrieb / In servizio / При работе	5XR73 ... 284 kip 7XR63 ... 267 kip 10XR83 ... 276 kip
	Fuera de servicio / Out of service / Hors service / Ausser Betrieb / Fuori servizio / В стационарном состоянии	5XR73 ... 324 kip 7XR63 ... 417 kip 10XR83 ... 467 kip

Otras zonas de viento o alturas superiores consultar / Other wind zones or additional hook heights on request / Autres zones de vent ou des hauteurs supplémentaires sur demande / Andere Windzonen oder weitere Hakenhöhen auf Anfrage / Per zone con velocità del vento particolari o altezze superiori consultare il fabbricante / При других ветренных зонах о при большой высоте проконсультируйтесь с нами

GRÚA ARRIOSTRADA

Braced crane / Grue à entretoisement / Abgespannter Kran / Gru ancorata / Нарцываемый кран

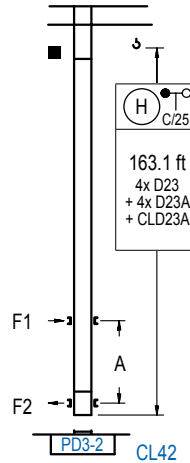


	5XA73	7XA63	10XA83
A max	168.6	223.8	259.8
B max	- 108.3	- 108.3	- 108.3
C max	154.9 154.9	154.9 154.9	154.9 154.9
H max	323.5 431.8	378.6 486.9	414.7 523.0

	ES73	ES43	ES63	ES6A3	ES83
A max	162.7	180.8	216.9	234.9	271.0
B max	- 108.3	- 108.3	- 108.3	- 108.3	- 108.3
C max	154.9 154.9	154.9 154.9	154.9 154.9	154.9 154.9	154.9 154.9
H max	317.6 425.9	335.6 443.9	371.7 480.0	389.8 498.0	425.9 534.1

GRÚA TREPADORA

Internal climbing crane / Grue avec cage de télescopage intérieure / Kran mit klettern im Gebäude / Gru in rampante in cavedio / Монтажная клет



nº	Ref.	∅	h
3	D23	6.6	18.0
4	D23A	6.6	18.0
18	CLD23A	6.6	10.2

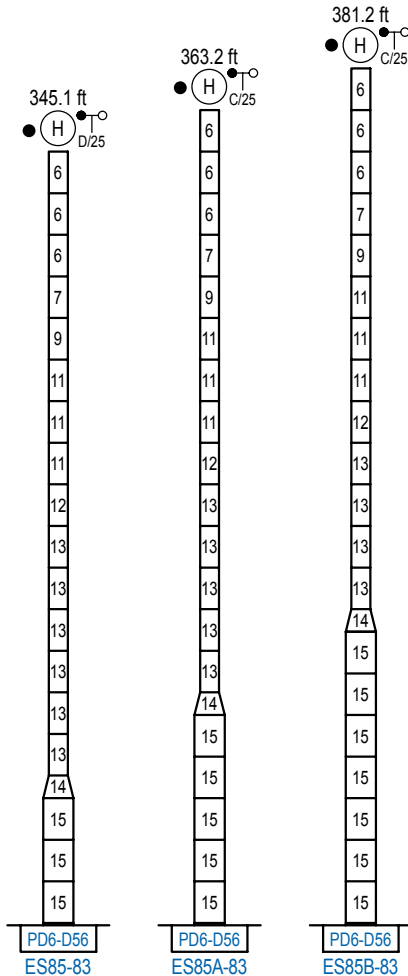
Otras zonas de viento, alturas superiores, arriostramientos o trepado interno consultar / Other wind zones, additional hook heights, tie frames or internal climbing on request / Autres zones de vent, des hauteurs supplémentaires, entretoisements ou grues avec cage de télescopage intérieure, sur demande / Andere Windzonen, weitere Hakenhöhen, Abspannungen zum Gebäude oder Klettern im Gebäude auf Anfrage / Per zone con velocità del vento particolari, altezze superiori, ancoraggi o rampante in cavedio, consultare il fabbricante / При других ветренных зонах, при большой высоте, привязках к зданию или наращивании крана внутри здания проконсультируйтесь с нами

ALTURAS ESPECIALES

Special heights / Spéciaux hauteurs / Extra Höhen / Conformazioni raccordate per altezze speciali / Для специальной высоты

∅ 13.1 ft

LC 2100



nº	Ref.	∅	h
6	S35	8.2	18.0
7	TD33A	8.2	18.0
8	D33	8.2	18.0
9	TD34	8.2	18.0
10	D34	8.2	18.0
11	D35	8.2	18.0
12	TD36B	8.2	18.0
13	D36	8.2	18.0
14	TD56D36	13.1	9.8
15	D56	13.1	18.0

Otras zonas de viento o alturas superiores consultar / Other wind zones or additional hook heights on request / Autres zones de vent ou des hauteurs supplémentaires sur demande / Andere Windzonen oder weitere Hakenhöhen auf Anfrage / Per zone con velocità del vento particolari o altezze superiori consultare il fabbricante / При других ветренных зонах o большой высоте проконсультируйтесь с нами



Construcciones Metálicas COMANSA S. A.

Tel.: (34) 948 335 020 / Fax: (34) 948 330 810 / e-mail: info@comansa.com
Polígono Urbizkain E-31620 HUARTE-PAMPLONA.- SPAIN

DS.1308.11.IA 12/13

21 LC400/39,680 lb