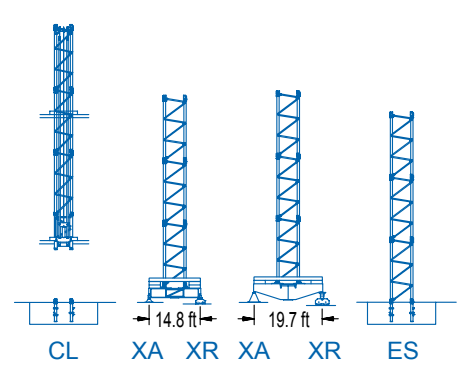


R	131.2	144.4	164.0	177.2	196.9	210.0	229.7	242.8	ft
19,400	17,630	15,430	11,680	10,140	8,810	8,160	7,270	6,540	lb
16,970	15,430	11,680	10,140	8,810	8,160	7,270	6,540	lb	



(H = H - 1.3 ft)



LC 2100

DIAGRAMA DE CARGAS

Load chart / Diagramme de charges / Lastdiagramm / Diagramma di carico / Диаграмма распределения нагрузки

R (ft)																
242.8	46.9 39,680	49.2 37,480	65.6 26,810	84.6 19,840	85.0 19,840	98.4 16,880	111.5 14,680	131.2 12,220	144.4 10,970	164.0 9,470	177.2 8,660	196.9 7,660	210.0 7,090	229.7 6,370	242.8 5,950	ft lb
229.7	47.9 39,680	49.2 38,490	65.6 27,550	86.6 19,840	87.6 19,840	98.4 17,460	111.5 15,180	131.2 12,660	144.4 11,360	164.0 9,820	177.2 8,980	196.9 7,940	210.0 7,360	229.7 6,610	ft lb	
210.0		51.5 39,680	65.6 29,940	82.0 23,080	93.2 19,840	95.5 19,840	111.5 16,710	131.2 13,940	144.4 12,530	164.0 10,840	177.2 9,930	196.9 8,790	210.0 8,150	ft lb		
196.9		51.2 39,680	65.6 29,710	82.0 22,900	92.5 19,840	95.5 19,840	111.5 16,720	131.2 13,960	144.4 12,550	164.0 10,860	177.2 9,950	196.9 8,810	ft lb			
177.2		51.5 39,680	65.6 30,000	82.0 23,140	93.5 19,840	97.1 19,840	111.5 17,030	131.2 14,210	144.4 12,780	164.0 11,060	177.2 10,140	ft lb				
164.0		53.5 39,680	65.6 31,420	82.0 24,260	97.4 19,840	101.7 19,840	111.5 17,940	131.2 14,990	144.4 13,480	164.0 11,680	ft lb					
144.4		59.7 39,680	65.6 35,520	82.0 27,510	98.4 22,260	108.6 19,840	114.8 19,840	131.2 17,140	144.4 15,430	ft lb						
131.2		60.7 39,680	65.6 36,350	82.0 28,160	98.4 22,800	110.9 19,840	117.8 19,840	131.2 17,630	ft lb							

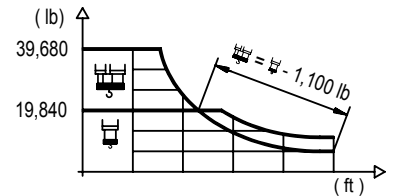


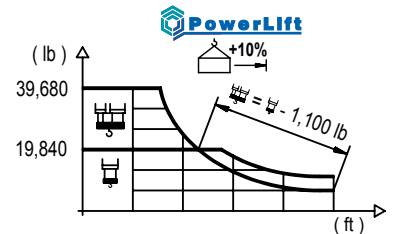


DIAGRAMA DE CARGAS POWERLIFT

Load chart PowerLift / Diagramme de charges PowerLift / Lastdiagramm PowerLift / Diagramma di carico PowerLift / Диаграмма распределения нагрузки PowerLift

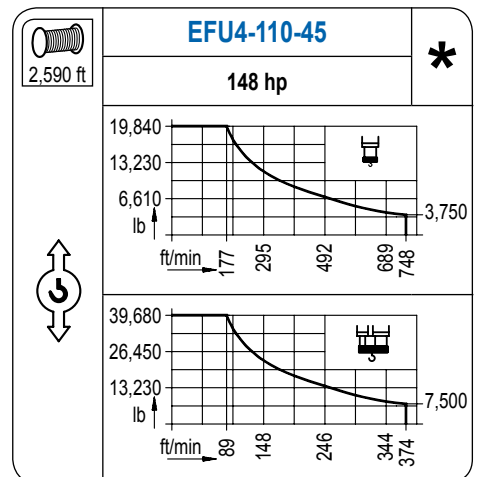
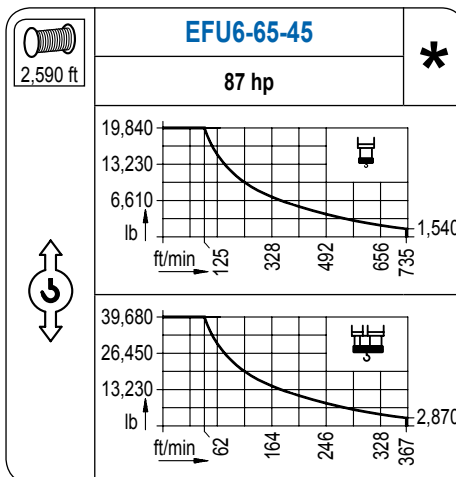
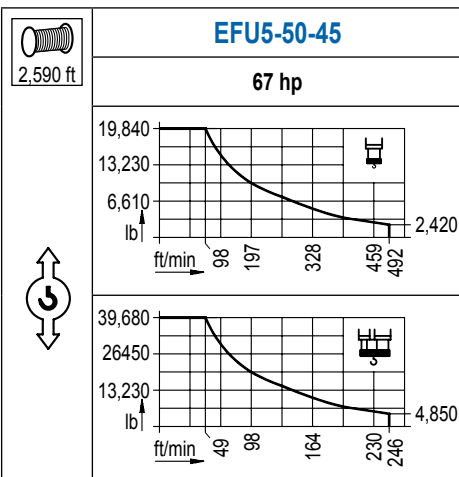
R (ft)																
242.8	49.5 39,680	65.6 28,680	82.0 22,060	89.6 19,840	91.9 19,840	114.8 15,490	124.7 14,130	131.2 13,330	144.4 11,990	164.0 10,360	177.2 9,470	196.9 8,390	210.0 7,780	229.7 7,010	242.8 6,540	ft lb
229.7	50.9 39,680	65.6 29,540	82.0 22,750	92.2 19,840	94.8 19,840	114.8 16,040	124.7 14,630	131.2 13,840	144.4 12,430	164.0 10,750	177.2 9,850	196.9 8,730	210.0 8,090	229.7 7,270	ft lb	
210.0	54.8 39,680	65.6 32,270	82.0 24,910	91.9 21,820	99.4 19,840	103.3 19,840	124.7 16,150	131.2 15,250	144.4 13,730	164.0 11,900	177.2 10,890	196.9 9,650	210.0 8,970	ft lb		
196.9	54.8 39,680	65.6 32,250	82.0 24,880	91.9 21,800	99.4 19,840	103.7 19,840	124.7 16,200	131.2 15,320	144.4 13,770	164.0 11,920	177.2 10,930	196.9 9,700	ft lb			
177.2	55.4 39,680	65.6 32,620	82.0 25,220	91.9 22,060	100.4 19,840	105.6 19,840	124.7 16,510	131.2 15,600	144.4 14,040	164.0 12,160	177.2 11,150	ft lb				
164.0	57.7 39,680	65.6 34,230	82.0 26,470	91.9 23,190	104.7 19,840	110.9 19,840	124.7 17,430	131.2 16,460	144.4 14,810	164.0 12,850	ft lb					
144.4		64.3 39,680	82.0 30,110	91.9 26,430	98.4 24,380	117.5 19,840	125.3 19,840	131.2 18,840	144.4 16,970	ft lb						
131.2		65.6 39,680	82.0 30,860	91.9 27,090	98.4 25,020	119.8 19,840	128.6 19,840	131.2 19,400	ft lb							



LC 2100

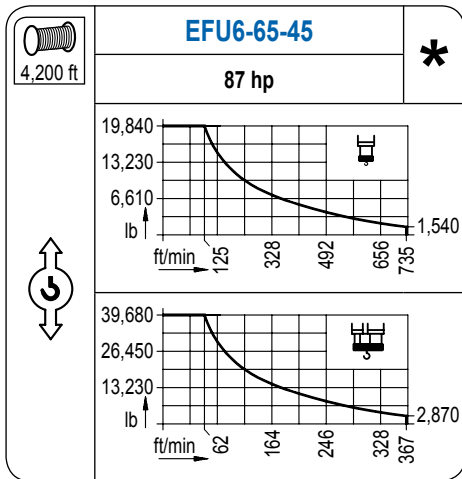
MECANISMOS

Mechanisms / Mécanismes / Antriebe / Meccanismi / Механизмы

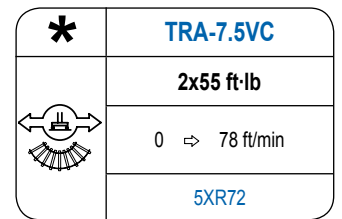
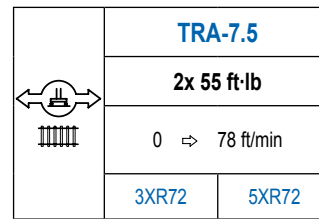
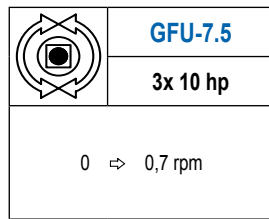
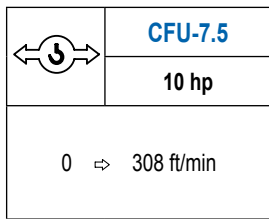
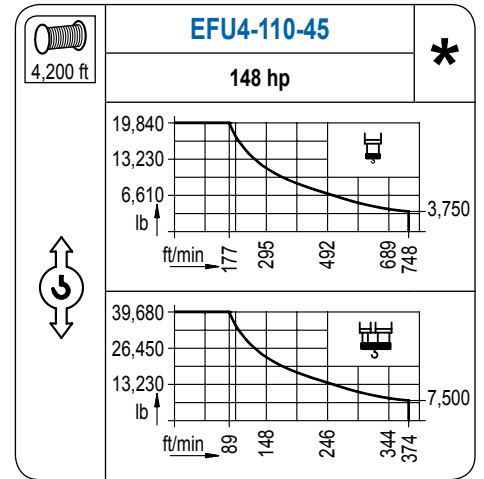


MECANISMOS

Mechanisms / Mécanismes / Antriebe / Meccanismi / Механизмы



Para mecanismos de alta capacidad de cable consultar cargas. / For mechanisms with high drum capacity, request loads. / Pour des mécanismes avec une grande capacité de câble il faut consulter. / Für Hubmechanismen mit hoher Kabelkapazität, Lastdiagramm anfragen. / Gru con tamburo ad alta capacità di avvolgimento fune, consultare il diagramma di carico. / Проконсультируйтесь о нагрузках при механизмах с большей вместимостью кабеля.



POTENCIA / POWER / PUISSANCE / LEISTUNG / POTENZA / МОЩНОСТЬ				Tensión de alimentación / Operating voltage / Tension de service / Betriebsspannung / Tensione di alimentazione / Напряжение источника питания	Generador / Generator / Générateur / Generator / Generatore / Генератор
Elevación / Hoist / Levage / Hub / Sollevamento / Тип механизма (подъем)	Carro / Trolley / Chariot / Laufkatze / Carrello / Грузовая тележка	Giro / Slewing / Rotation / Drehbewegung / Rotazione / Поворот	Traslación / Travel / Translation / Laufkatze / Verfahrbewegung / Traslazione / Ход		
EFU5-50-45	CFU-7.5	(3x) GFU-7.5	(2x) TRA-7.5	480 V 3ph 60 Hz	160 kVA
EFU6-65-45					180 kVA
EFU6L-65-45					180 kVA
EFU4-110-45					250 kVA
EFU4L-110-45					250 kVA

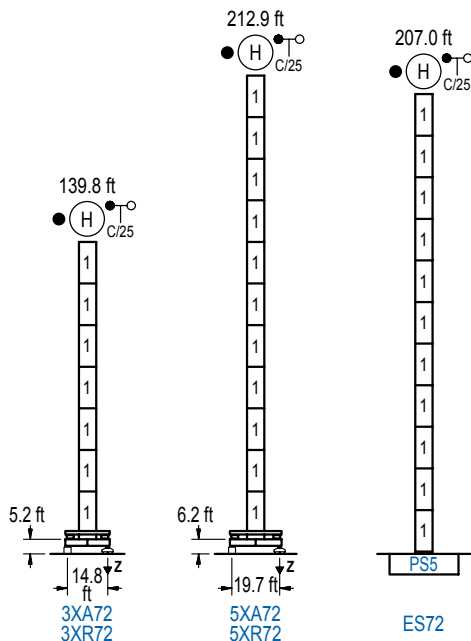
Optional / Optional / En option / Kaufoption / Opzionale / Опционально

*

ALTURAS BAJO GANCHO

Heights under hook / Hauteurs sous crochet / Hakenhöhen / Altezza sotto gancio / Высота под крюком

∅ 6.6 ft



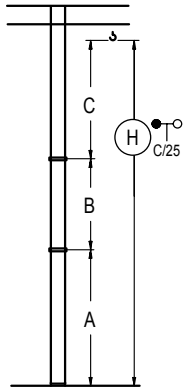
n°	Ref.	∅	h
1	S25	6.6	18.0

Z máx.	En servicio / In operation / En service / In Betrieb / In servizio / При работе	3XR72.. 231 kip 5XR72.. 236 kip
	Fuera de servicio / Out of service / Hors service / Ausser Betrieb / Fuori servizio / В стационарном состоянии	3XR72.. 163 kip 5XR72.. 291 kip

Otras zonas de viento o alturas superiores consultar / Other wind zones or additional hook heights on request / Autres zones de vent ou des hauteurs supplémentaires sur demande / Andere Windzonen oder weitere Hakenhöhen auf Anfrage / Per zone con velocità del vento particolari o altezze superiori consultare il fabbricante / При других ветренных зонах о при большой высоте проконсультируйтесь с нами

GRÚA ARRIOSTRADA

Braced crane / Grue à entretoisement / Abgespannter Kran / Gru ancorata / Нарастиваемый кран

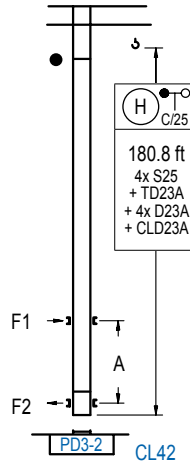


	3XA72	5XA72	
A max	95.5	168.6	
B max	-	108.3	108.3
C max	170.6	152.6	152.6
H max	266.1	356.3	429.5

	ES72
A max	162.7
B max	-
C max	152.6
H max	315.3

GRÚA TREPADORA

Internal climbing crane / Grue avec cage de télescopage intérieure / Kran mit klettern im Gebäude / Gru in rampante in cavedio / Монтажная клет



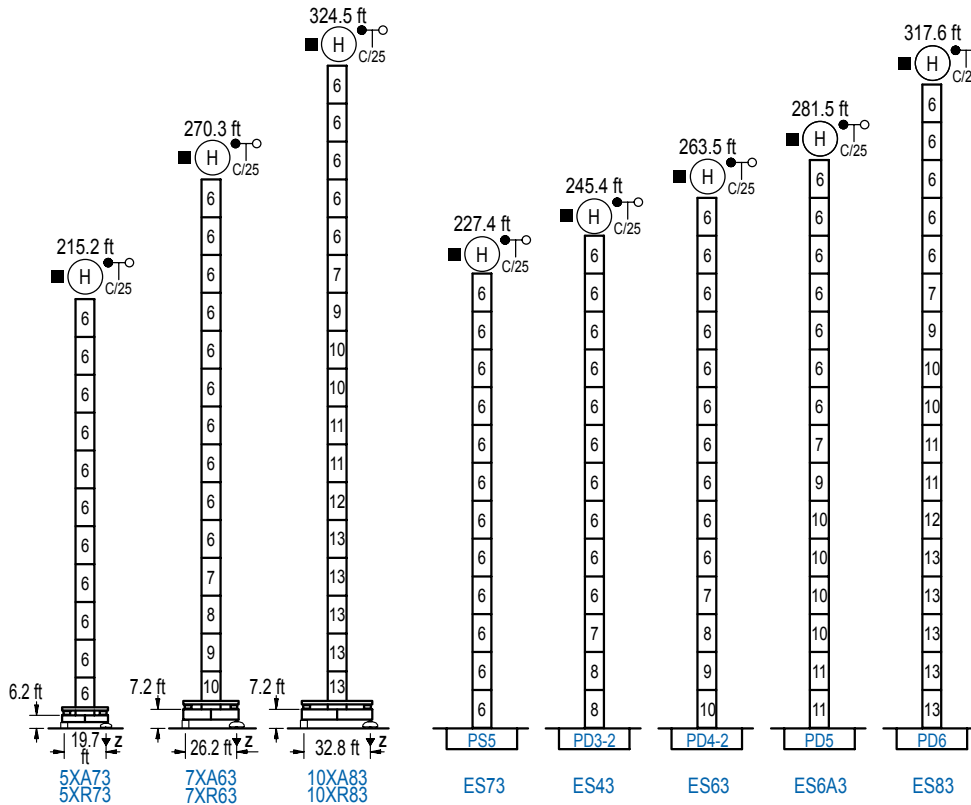
nº	Ref.	∅	h
1	S25	6.6	18.0
2	TD23A	6.6	18.0
3	D23A	6.6	18.0
18	CLD23A	6.6	10.2

Otras zonas de viento, alturas superiores, arriostramientos o trepado interno consultar / Other wind zones, additional hook heights, tie frames or internal climbing on request / Autres zones de vent, des hauteurs supplémentaires, entretoisements ou grues avec cage de télescopage intérieure, sur demande / Andere Windzonen, weitere Hakenhöhen, Abspannungen zum Gebäude oder Klettern im Gebäude auf Anfrage / Per zone con velocità del vento particolari, altezze superiori, ancoraggi o rampante in cavedio, consultare il fabbricante / При других ветренных зонах, при большой высоте, привязках к зданию или наращивании крана внутри здания проконсультируйтесь с нами

ALTURAS BAJO GANCHO

Heights under hook / Hauteurs sous crochet / Hakenhöhen / Altezza sotto gancio / Высота под крюком

∅ 8.2 ft



nº	Ref.	∅	h	nº	Ref.	∅	h	nº	Ref.	∅	h
6	S35	8.2	18.0	9	TD34	8.2	18.0	12	TD36B	8.2	18.0
7	TD33A	8.2	18.0	10	D34	8.2	18.0	13	D36	8.2	18.0
8	D33	8.2	18.0	11	D35	8.2	18.0				

Otras zonas de viento o alturas superiores consultar / Other wind zones or additional hook heights on request / Autres zones de vent ou des hauteurs supplémentaires sur demande / Andere Windzonen oder weitere Hakenhöhen auf Anfrage / Per zone con velocità del vento particolari o altezze superiori consultare il fabbricante / При других ветренных зонах о при большой высоте проконсультируйтесь с нами



Construcciones Metálicas COMANSA S. A.

Tel.: (34) 948 335 020 / Fax: (34) 948 330 810 / e-mail: info@comansa.com
Polígono Urbizkain E-31620 HUARTE-PAMPLONA.- SPAIN

DS.1308.09.IA 11/13

21 LC290/39,680 lb