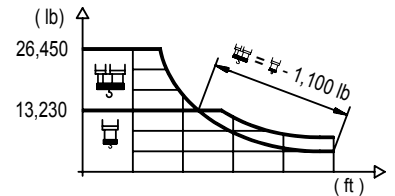


LC 2100

## DIAGRAMA DE CARGAS

Load chart / Diagramme de charges / Lastdiagramm / Diagramma di carico / Диаграмма распределения нагрузки

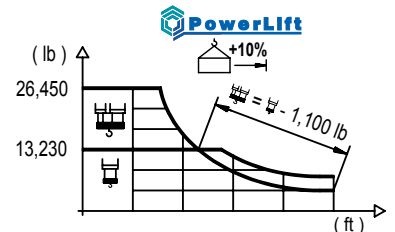
R (ft)	1.260 ft				2.590 ft									
242.8	66.3	82.0	98.4	117.8	122.4	131.2	144.4	164.0	177.2	196.9	210.0	229.7	242.8	ft
	26,450	20,600	16,530	13,220	13,220	12,220	10,970	9,470	8,660	7,660	7,090	6,370	5,950	lb
229.7	67.9	82.0	98.4	120.7	126.3	131.2	144.4	164.0	177.2	196.9	210.0	229.7	ft	
	26,450	21,180	17,010	13,220	13,220	12,660	11,360	9,820	8,980	7,940	7,360	6,610	lb	
210.0	73.2	82.0	98.4	111.5	129.9	137.5	144.4	164.0	177.2	196.9	210.0	ft		
	26,450	23,080	18,580	15,970	13,220	13,220	12,530	10,840	9,930	8,790	8,150	lb		
196.9	72.5	82.0	98.4	111.5	129.3	137.8	144.4	164.0	177.2	196.9	ft			
	26,450	22,900	18,450	15,860	13,220	13,220	12,550	10,860	9,950	8,810	lb			
177.2	73.2	82.0	98.4	111.5	130.6	140.1	144.4	164.0	177.2	ft				
	26,450	23,140	18,650	16,030	13,220	13,220	12,780	11,060	10,140	lb				
164.0	76.1	82.0	98.4	111.5	131.2	135.8	147.0	164.0	ft					
	26,450	24,260	19,570	16,850	13,810	13,220	13,220	11,680	lb					
144.4		85.0	98.4	111.5	121.4	131.2	142.4	ft						
		26,450	22,260	19,210	17,370	15,800	14,320	lb						
131.2		86.6	98.4	111.5	121.4	129.3	ft							
		26,450	22,800	19,680	17,800	16,530	lb							



## DIAGRAMA DE CARGAS POWERLIFT

Load chart PowerLift / Diagramme de charges PowerLift / Lastdiagramm PowerLift / Diagramma di carico PowerLift / Диаграмма распределения нагрузки PowerLift

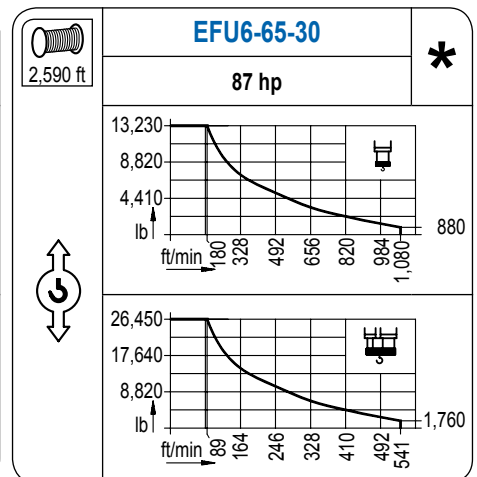
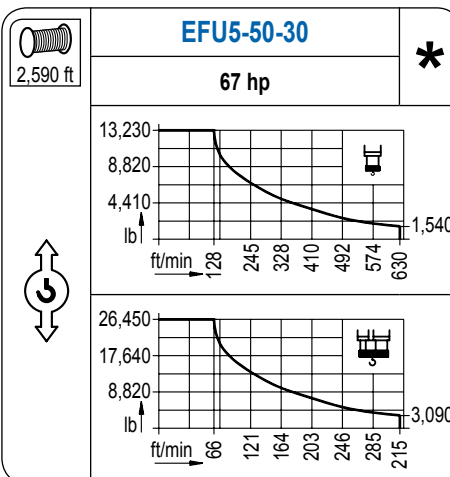
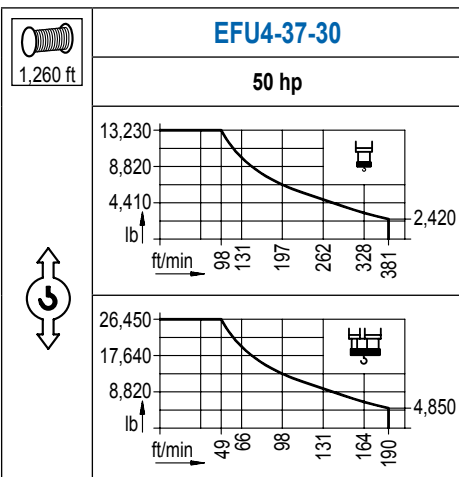
R (ft)	1.260 ft				2.590 ft									
242.8	70.2	82.0	98.4	125.0	132.2	144.4	164.0	177.2	196.9	210.0	229.7	242.8	ft	
	26,450	22,070	17,750	13,230	13,230	11,990	10,360	9,480	8,400	7,780	7,010	6,550	lb	
229.7	72.2	82.0	98.4	128.3	136.5	144.4	164.0	177.2	196.9	210.0	229.7	ft		
	26,450	22,750	18,320	13,230	13,230	12,430	10,760	9,850	8,730	8,090	7,280	lb		
210.0		78.1	98.4	114.8	138.8	149.3	164.0	177.2	196.9	210.0	ft			
		26,450	20,110	16,710	13,230	13,230	11,900	10,890	9,660	8,970	lb			
196.9		77.8	98.4	114.8	138.8	149.6	164.0	177.2	196.9	ft				
		26,450	20,080	16,690	13,230	13,230	11,930	10,930	9,700	lb				
177.2		78.7	98.4	114.8	140.1	152.2	164.0	177.2	ft					
		26,450	20,350	16,910	13,230	13,230	12,170	11,160	lb					
164.0		82.0	98.4	114.8	146.3	159.8	164.0	ft						
		26,450	21,380	17,810	13,230	13,230	12,850	lb						
144.4		91.9	98.4	114.8	131.2	142.2	ft							
		26,450	24,380	20,370	17,370	15,760	lb							
131.2		93.8	98.4	114.8	129.1	ft								
		26,450	25,020	20,900	18,190	lb								



LC 2100

## MECANISMOS

Mechanisms / Mécanismes / Antriebe / Meccanismi / Механизмы



## MECANISMOS

Mechanisms / Mécanismes / Antriebe / Meccanismi / Механизмы

	<b>CFU-7.5</b>
	<b>10 hp</b>
0 ⇔ 308 ft/min	

	<b>GFU-7.5</b>
	<b>3x 10 hp</b>
0 ⇔ 0,7 rpm	

	<b>TRA-7.5</b>
	<b>2x 55 ft-lb</b>
0 ⇔ 78 ft/min	
<b>3XR72</b>	<b>5XR72</b>

	<b>TRA-7.5VC</b>
	<b>2x 55 ft-lb</b>
0 ⇔ 78 ft/min	
<b>5XR72</b>	

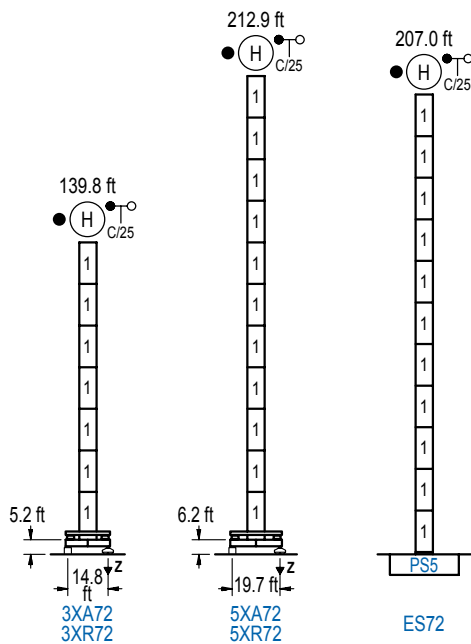
POTENCIA / POWER / PUISSANCE / LEISTUNG / POTENZA / МОЩНОСТЬ				Tensión de alimentación / Operating voltage / Tension de service / Betriebsspannung / Tensione di alimentazione / Напряжение источника питания	Generador / Generator / Générateur / Generator / Generatore / Генератор
Elevación / Hoist / Levage / Hub / Sollevamento / Тип механизма (подъем)	Carro / Trolley / Chariot / Laufkatze / Carrolo / Грузовая тележка	Giro / Slewing / Rotation / Drehbewegung / Rotazione / Поворот	Traslación / Travel / Translation / Verfahrbewegung / Traslazione / Ход	480 V 3ph 60 Hz	130 kVA 160 kVA 180 kVA
EFU4-37-30	CFU-7.5	(3x) GFU-7.5	(2x) TRA-7.5		
EFU5-50-30					
EFU6-65-30					

Opcional / Optional / En option / Kaufoption / Opzionale / Опционально
<b>*</b>

## ALTURAS BAJO GANCHO

Heights under hook / Hauteurs sous crochet / Hakenhöhen / Altezza sotto gancio / Высота под крюком

∅ 6.6 ft

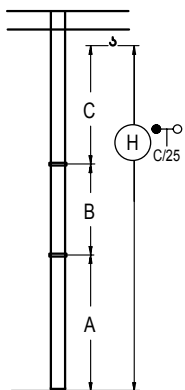


	n°	Ref.	∅	h
	1	S25	6.6	18.0

<b>Z máx.</b>	En servicio / In operation / En service / In Betrieb / In servizio / При работе	3XR72.. 231 kip 5XR72.. 236 kip
	Fuera de servicio / Out of service / Hors service / Ausser Betrieb / Fuori servizio / В стационарном состоянии	3XR72.. 154 kip 5XR72.. 291 kip

## GRÚA ARRIOSTRADA

Braced crane / Grue à entretoisement / Abgespannter Kran / Gru ancorata / Нарастиваемый кран

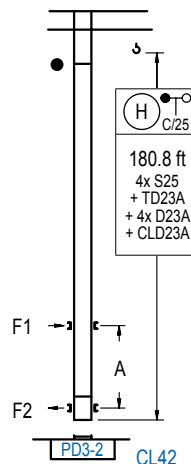


	3XA72	5XA72
A max	95.5	168.6
B max	- 108.3	- 108.3
C max	170.6 152.6	152.6 152.6
H max	266.1 356.3	320.2 429.5

	ES72
A max	162.7
B max	- 108.3
C max	152.6 152.6
H max	315.3 423.6

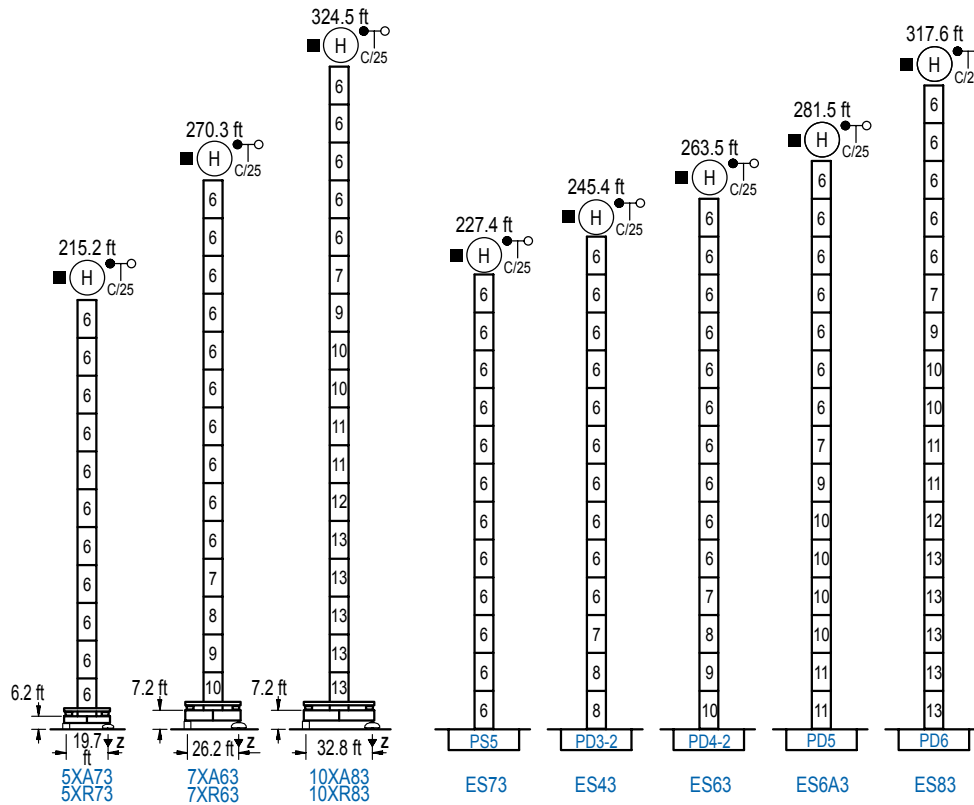
## GRÚA TREPADORA

Internal climbing crane / Grue avec cage de télescopage intérieure / Kran mit klettern im Gebäude / Gru in rampante in cavedio / Монтажная келья



	n°	Ref.	∅	h
	1	S25	6.6	18.0
	2	TD23A	6.6	18.0
	3	D23A	6.6	18.0
	18	CLD23A	6.6	10.2

Otras zonas de viento, alturas superiores, arriostramientos o trepado interno consultar / Other wind zones, additional hook heights, tie frames or internal climbing on request / Autres zones de vent, des hauteurs supplémentaires, entretoisements ou grues avec cage de télescopage intérieure, sur demande / Andere Windzonen, weitere Hakenhöhen, Abspannungen zum Gebäude oder Klettern im Gebäude auf Anfrage / Per zone con velocità del vento particolari, altezze superiori, ancoraggi o rampante in cavedio, consultare il fabbricante / При других ветренных зонах, при большой высоте, привязках к зданию или наращивании крана внутри здания проконсультируйтесь с нами



n°	Ref.	∅	h	n°	Ref.	∅	h	n°	Ref.	∅	h
6	S35	8.2	18.0	9	TD34	8.2	18.0	12	TD36B	8.2	18.0
7	TD33A	8.2	18.0	10	D34	8.2	18.0	13	D36	8.2	18.0
8	D33	8.2	18.0	11	D35	8.2	18.0				

Otras zonas de viento o alturas superiores consultar / Other wind zones or additional hook heights on request / Autres zones de vent ou des hauteurs supplémentaires sur demande / Andere Windzonen oder weitere Hakenhöhen auf Anfrage / Per zone con velocità del vento particolari o altezze superiori consultare il fabbricante / При других ветренных зонах о при большой высоте проконсультируйтесь с нами